

INSPIRAL



OPERATING LIGHTS
OPERATING TABLES
2022

INSPIRAL

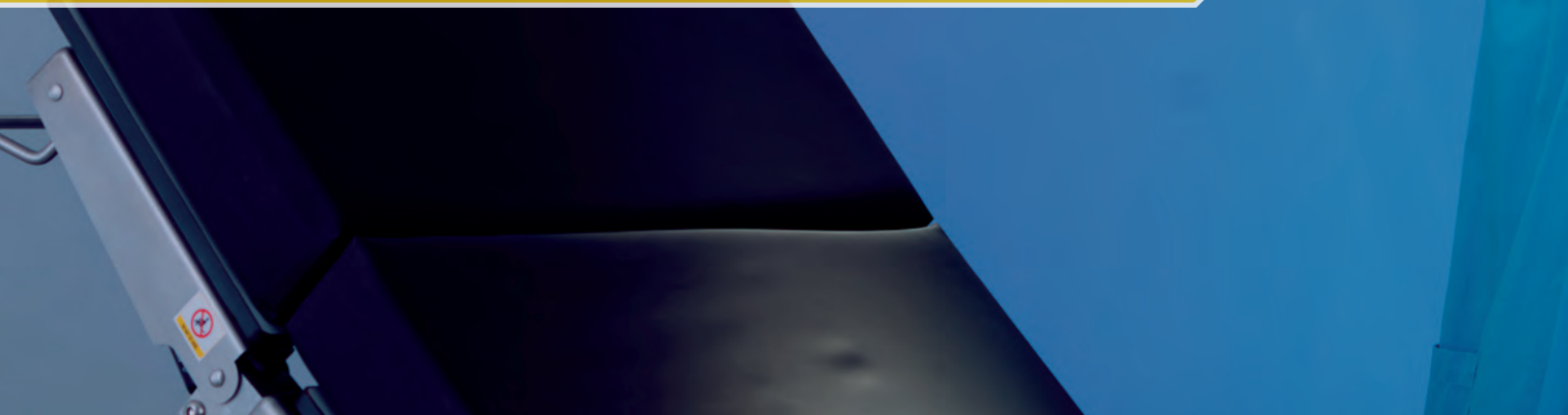
www.inspital.com

CONTENT

| | |
|----|-----------------------------|
| 04 | OPERATING LIGHTS |
| 14 | PENDANT SYSTEMS |
| 16 | OPERATING TABLES |
| 25 | C-ARM IMAGING TABLE |
| 26 | SURGICAL POSITIONS |
| 28 | OPERATING TABLE ACCESSORIES |



New generation, LED Technology

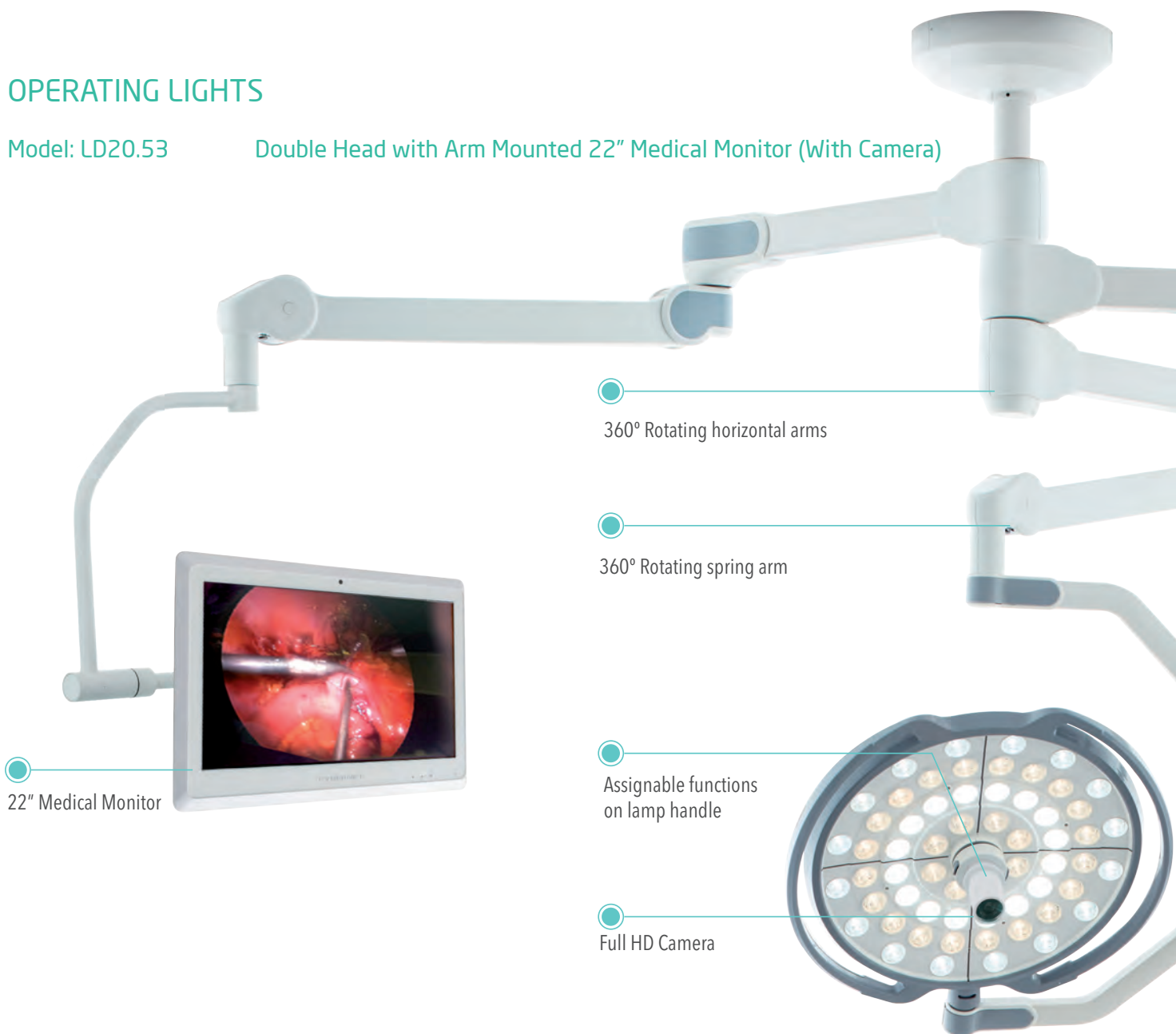




OPERATING LIGHTS

Model: LD20.53

Double Head with Arm Mounted 22" Medical Monitor (With Camera)



Touch Screen Pro Control Unit

- ◆ Inspital Unique tablet application allows to control all functions via wider Touch Screen Pro Control Unit. Optional tablet can be used as a wall control unit with its wall stand.



Laser Positioning



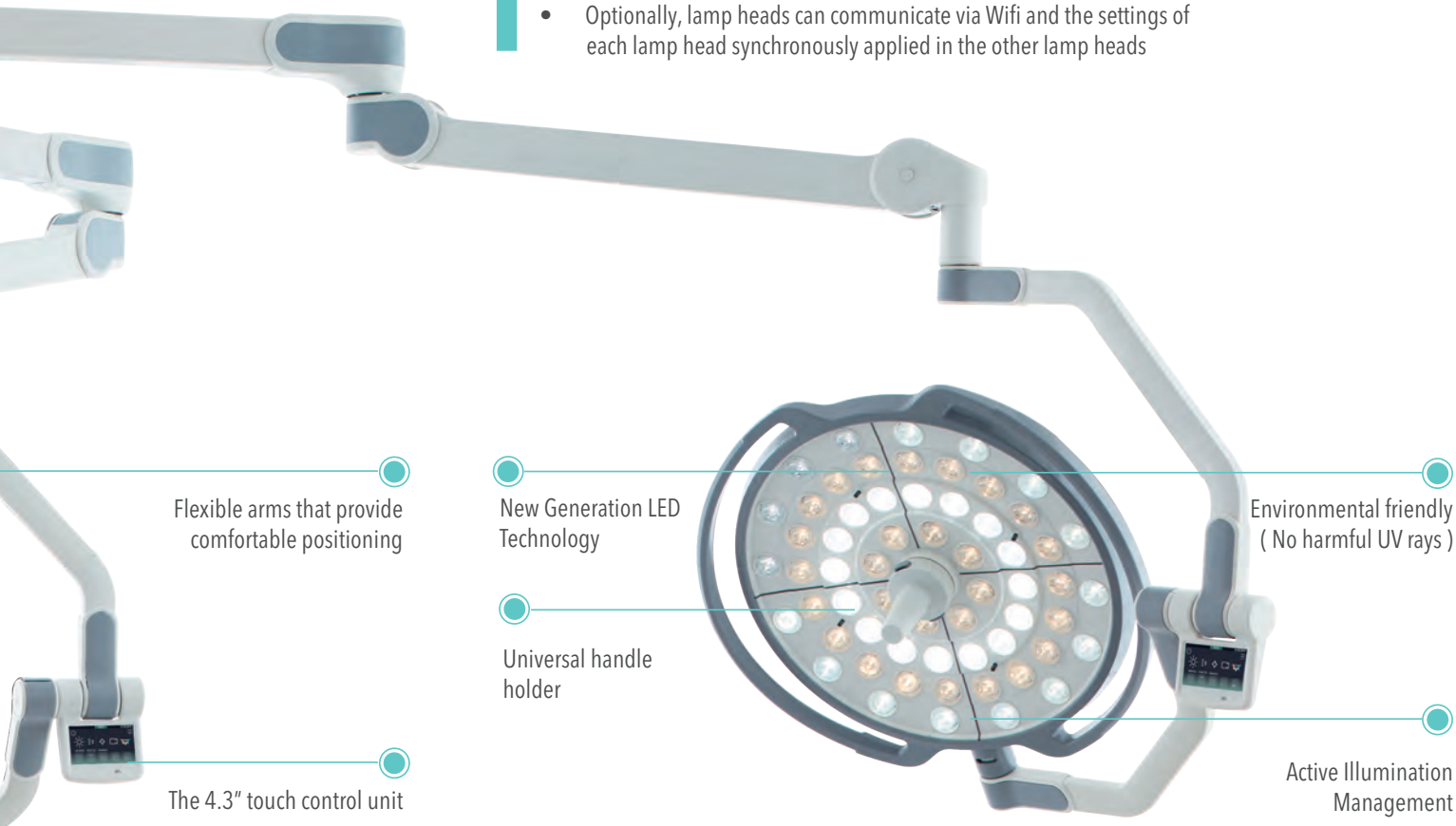
- ◆ Each lamp head has a laser guide to position the lighting center easily and efficiently

Automatic Distance Management (ADM)



- ◆ ADM system measures the distance between patient and light head automatically between 90-110cm and ensure that the surgical site always appears in the best light, literally.

- Illumination Intensity in the Center is not affected by the change of color temperature and focus setting. The illumination intensity remains constant at 160k lux (+/-5k)
- When the AutoLight feature is active, the light intensity at the midpoint can be kept constant at any height, angle or obstacle with the PID method.
- There is a laser marking feature to mark the midpoint of the Central Illumination Intensity.
- Optionally, lamp heads can communicate via Wifi and the settings of each lamp head synchronously applied in the other lamp heads



Active Illumination Management (AIM)

- ◆ Inspital LED light technology provides the best illumination, even when surgeons are blocking the LEDs. The loss of illumination when certain LEDs are obstructed is automatically compensated by the AIM system.



Endo Light Mode / StandBy Mode

- ◆ Lamp can be switched to the endolight mode by a single button.
- ◆ Stylish blue LED strips in stand by mode

Touch Screen Control Unit



Touch Screen Control Unit

- ◆ *Standard 4.3" LCD touch screen panel to control all functions clearly by tapping and swiping the applicable icons.*



Model: LD20.24
Model: LD20.52

Double Head with 22" Wall Medical Monitor (With Camera)
Double Head with Camera (Without Monitor)



Model: LD10.03

Triple Head Operating Lights



High-Tech, Maximum Lightening

Illumination Stability Function (ISF)
Thanks to the automatic balancing system, the ISF system prevents the LED lighting intensity from decreasing and ensures that the lighting power remains constant.

Thus, the lighting system guarantees optimum working conditions in all circumstances.



Model: LD10.02 Double Head Operating Lights
Model: LD10.01 Single Head Operating Lights



Model: LD05.06 Mobile with Battery
Battery back up system provides 2,5 hours of energy



Model: LD30.00 Medical Imaging Workstation

Medical Imaging Workstation is an advanced medical grade image recorder. It has 4.3" LCD monitor for easy browse. Quick set up and easy to use system detects video connection automatically.

| | |
|----------------------|-------------------------------|
| • Display | : 4.3 inch LCD |
| • Inlet voltage | : DC 12V 3A |
| • Hard disc capacity | : 500 GB |
| • Recording Time | |
| High quality | : 75 hours |
| Medium quality | : 115 hours |
| Low quality | : 275 hours |
| • Dimention | : 262(L) X 172(W) X 120(H) mm |

Video Foot Pedal port (3.5mm stereo jack) X 1, Photo Foot Pedal port (3.5mm stereo jack) X 1, IR Receiver cable port (3.5mm stereo jack) X 1, READ HDD port (Mini USB) X 1, PC port (USB 3.0) X 1, Extensionport (RS232) X 1, DC Power Supply port X 1

OPERATING LIGHTS

INSPIRAL LED operating lights are designed to meet all surgical illumination requirements of operating theatres. New generation LED technology helps the surgeons to operate and view the surgery area clearly. INSPIRAL LED lights can be adapted in any size of operating theatres including large hybrid types with variety of models & combinations.

TECHNICAL SPECIFICATIONS

| | |
|--|--|
| • Max. Illumination power, in 1 m | : 160.000 Lux |
| • Diameter of lighthouse | : Ø670 mm |
| • Color temperature | : 3000 K - 5000 K |
| • Color rendering index, Ra CRI | : 96% |
| • Dimming Range | : % 1 – 100 |
| • Light Field Diameter d10 | : 24 – 36 cm / 9.5" - 14.2" |
| • Light Field Diameter d50 | : 13 – 28 cm / 5.1" – 11" |
| • Number of LED modules | : 60 |
| • Lifetime of LED | : >60.000 h |
| • Degree of turbulence (standard value 37.5% max.) | : 29% |
| • Depth of the volume of light L1 + L2 at 20% | : 130 cm / 51.2" |
| • Depth of the volume of light L1 + L2 at 60% | : 76 cm / 30" |
| • Camera | : 1080p Full HD Camera : 10x Optical zoom : AutoFocus |
| • Medical Monitor | : AutoFocus : Resolution 1920 x 1200 |
| • Irradiance at nominal illuminance | : 510W/m ² |
| • Additional options | : Touch Screen Pro Control Unit, Camera, Monitor, Battery Back Up |

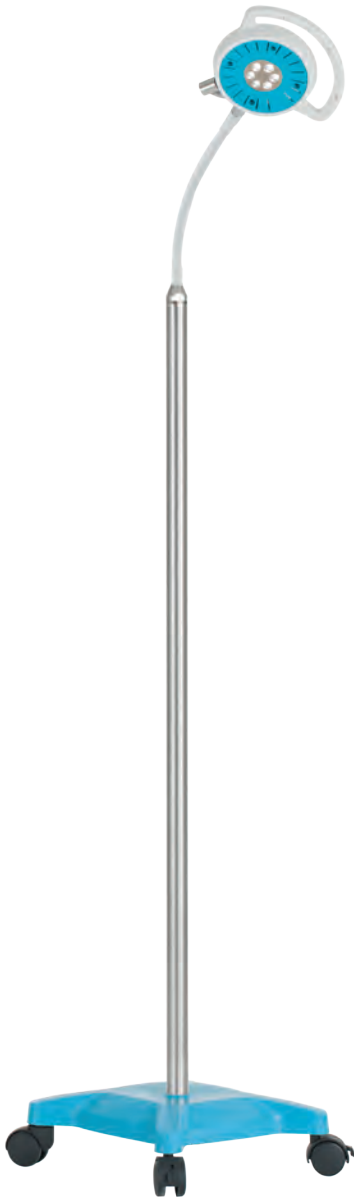
♦ All values are measured according to IEC 60601-2-41.



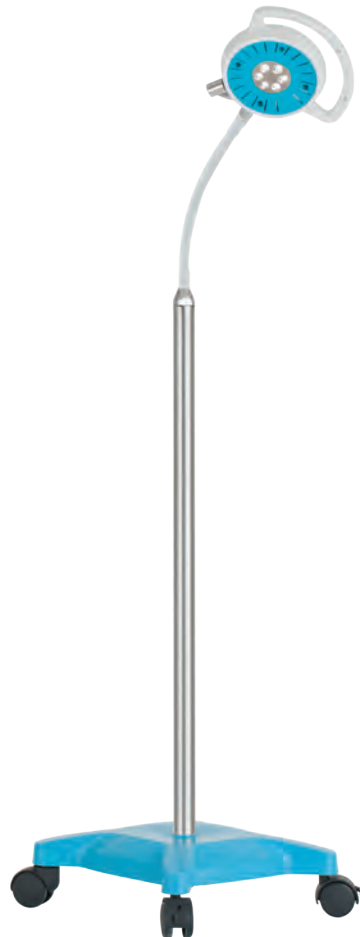
Battery

- ♦ External battery can be added for ceiling type operating lights
A.C. : LD05.05

EXAMINATION LIGHTS



Model: LD02.08



Model: LD02.05



LED Technology

- ◆ Advanced LED technology to fulfill lighting requirements of any kind of minor surgeries and examinations
- ◆ Well-focused LED light thanks to the specially designed reflector system
- ◆ Maintenance free LED technology
- ◆ Easily accessible ON / OFF switching and 5-stage dimming control

Body Structure & Head Design

- ◆ Head can be positioned in required area and can be rotated 360° thanks to its flexible lamp arm
- ◆ Modern stylish and slim design

TECHNICAL SPECIFICATIONS

| | |
|-------------------------|--|
| • Illumination | : 30.000 Lux / 0,4 m |
| • Light Head Diameter | : Ø150 mm |
| • LED Lifetime | : >60.000 h |
| • CRI | : 95% |
| • Number of LED Modules | : 6 |
| • Color Temperature | : 4500 K |
| • Height | : LD02.08 / 1500 mm : LD02.05 / 1100 mm |

PENDANT SYSTEMS

Model: FX40.15M Heavy Duty Motorised Pendant



Inspital single joint pendants are designed to provide single point service for medical gas, electricity and equipment positioning nearby the patient. Mobility, flexibility and heavy duty design gives a strong support in operating theatres. Every pendnat is custom design by our experienced sales support team.

Features

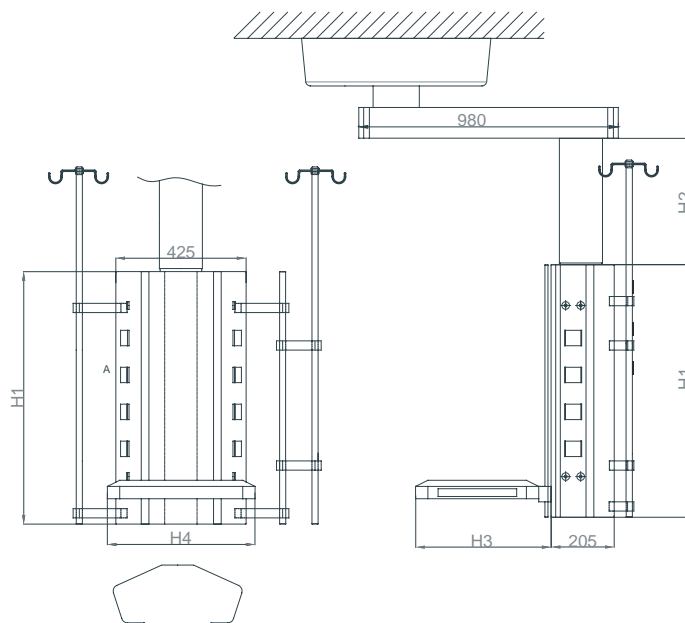
- High payload capacities up to 580 kg
- Load capacity on motorized arm 150 kg
- Color coded brake buttons and joints
- Optional electromagnetic and pneumatic brake system
- Optional bluetooth sound system

Standard Accessories

- Power Outlet: 8 Number UK, USA, Europe
- Grounding Note: 8 Pcs
- Rail Shelf: 1 Pc
- IV Pole 2 Pcs

Optional Accessories

- Shelves
- IV Pole
- Drawer
- Data socket (RJ45)
- Pressure gauge for Medical Gases
- Medical gas outlets (BS, DIN, NF)



| H1 dimensions | H2 dimensions | H3, H4 dimensions |
|---------------|---------------|-------------------|
| 600 mm | 300 mm | 500x400 |
| 800 mm | 500 mm | |
| 1000 mm | 700 mm | |
| 1200 mm | 900 mm | |
| | 1100 mm | |



Model: FX40.20D
Heavy Duty Double Joint Pendant



Model: FX40.10S
Heavy Duty Single Joint Pendant

A photograph of an operating room. In the foreground, a white mobile medical unit with two large clear reservoirs and tubing is on wheels. To its right is a surgical table with a black drape, tilted upwards. A large circular surgical light with many small lights is in the upper right. In the background, a metal cart is visible. An orange semi-transparent banner is across the middle of the image.

Operating Together for Life

INSPIRAL



ELECTRO-HYDRAULIC OPERATING TABLE OT80.20 NOVUS



PU mattress for ensuring patient comfort



Long and strong rail line for accessories



Hand control unit



Column control panel



T-Base design for maximum approach



INSPI TAL operating tables are designed to meet all special requirements of operating theaters with its powerful and stable electro-hydraulic systems. Wide range of accessories makes them very flexible for different surgical disciplines.

Bariatric version of INSPI TAL tables with wider table top and higher lifting capacity (360 kgs) can meet specific requirements of this kind of operations.

Durable, long life
PU mattress

Optimum X-Ray
image quality

Curved design
PU mattress

Telescopic stainless
steel column



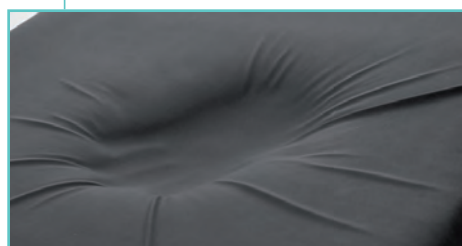
Hand control unit with color LCD display

- ◆ Digital Screen
- ◆ Battery level monitoring by remote control unit
- ◆ Program memory for 3 positions
- ◆ Key lock
- ◆ Collision protection feature

Stainless steel t-base, optional



Visco mattress, optional



ELECTRO-HYDRAULIC OPERATING TABLE OT80.25



Optimal Clearance In Surgical Area

- ◆ Maximum surgical area visibility with its kidney elevator, integrated on the table and adjustable up to 150° (70 mm)



Sliding

- ◆ Image reception ability in a wide area without disturbing the sterile environment by its 300 mm sliding feature.

MECHANICAL SURGERY TABLE OT80.10

INSPI TAL day surgery table is an all-in-one manual surgery table for transport, preoperative care, surgery and recovery. It is an ideal and cost effective solution for busy day surgery needs.



Functional Design

- ◆ Easy to handle modular design for different surgical disciplines



Accessory Positioning

- ◆ Stainless steel rail attachments integrated on both sides of the table, enabling accessory mounting without removing existing accessories



TECHNICAL FEATURES

| | | |
|---------------------------|-----------------------------|-----------------------------|
| • Model | : OT80.20 | : OT80.25 |
| • Sliding Movement | : 300 mm | : 300 mm |
| • Lateral Tilt Movement | : + 20° / - 20° | : + 20° / - 20° |
| • Back Rest Movement | : + 80° / - 45° | : + 80° / - 45° |
| • Trendelenburg | : + 30° | : + 30° |
| • Reverse Trendelenburg : | : - 30° | : - 30° |
| • Leg Rest Up / Down : | : + 30° / - 80° | : + 30° / - 80° |
| • Head Rest Movement | : + 30° / - 90° | : + 30° / - 90° |
| • Flex / Reflex Position | : + 225° / - 100° | : + 225° / - 100° |
| • Width x Length: | : 560x2200 mm | : 560x2200 mm |
| • Height (min) | : 595 mm | : 595 mm |
| • Height (max) | : 1035 mm | : 1035 mm |
| • Mattress Thickness | : 70 mm | : 70 mm |
| • Castors Diameter | : Ø 100 mm | : Ø 125 mm |
| • Max Patient Weight | : 360 kg / 800 lbs. | : 360 kg / 800 lbs. |
| • Kidney Surgery Position | : 150° (optional), OT80.20K | : 150° (optional), OT80.25K |
| • Stainless Steel T-base | : Optional, OT80.20S | : - |
| • Visco mattress | : Optional, OT80.20V | : Optional, OT80.25V |

MOVEMENTS

| | | |
|-------------------------|-----|-----|
| • Height | : ✓ | : ✓ |
| • Back Rest | : ✓ | : ✓ |
| • Trendelenburg | : ✓ | : ✓ |
| • Reverse Trendelenburg | : ✓ | : ✓ |
| • Lateral Tilt | : ✓ | : ✓ |
| • Sliding | : ✓ | : ✓ |
| • Central Locking | : ✓ | : ✓ |
| • Head Rest | : ✓ | : ✓ |
| • Leg Rests, Up / Down | : ✓ | : ✓ |

*Max. & Min. heights are measured without mattress

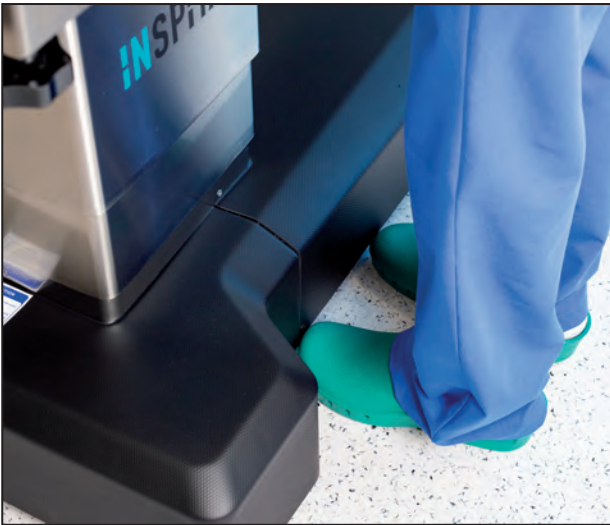
Electro-hydraulic ✓

Manual ✓



| | | |
|------------------------------|-----------------------------|------------------------|
| : OT80.20 Novus | : OT80.15 / Bariatric | : OT80.10 / Mechanical |
| : 300 mm | : 300 mm | : - |
| : + 20° / - 20° | : + 20° / - 20° | : - |
| : + 80° / - 45° | : + 80° / - 45° | : +45° / - 25° |
| : + 30° | : + 30° | : + 25° |
| : - 30° | : - 30° | : - 10° |
| : + 30° / - 80° | : + 30° / - 80° | : + 30° / - 80° |
| : + 30° / - 90° | : + 30° / - 90° | : + 30° / - 90° |
| : + 225° / - 100° | : + 225° / - 100° | : - |
| : 560x2200 mm | : 720x2200 mm | : 560x2200 mm |
| : 595 mm | : 595 mm | : 590 mm |
| : 1035 mm | : 1035 mm | : 850 mm |
| : 70 mm | : 70 mm | : 70 mm |
| : Ø 100 mm | : Ø 100 mm | : Ø 125 mm |
| : 360 kg / 800 lbs. | : 454 kg / 1000 lbs. | : 250 kg / 550 lbs. |
| : 150° (optional), OT80.20NK | : 150° (optional), OT80.15K | : - |
| : Optional, OT80.20NS | : Optional, OT80.15S | : - |
| : Optional, OT80.20NV | : Standard, OT80.15 | : Optional, OT80.10V |
| Functional | | |
| : ✓ | : ✓ | : ✓ |
| : ✓ | : ✓ | : ✓ |
| : ✓ | : ✓ | : ✓ |
| : ✓ | : ✓ | : ✓ |
| : ✓ | : ✓ | : - |
| : ✓ | : ✓ | : - |
| : ✓ | : ✓ | : ✓ |
| : ✓ | : ✓ | : ✓ |
| : ✓ | : ✓ | : ✓ |

- ✓ Digital Screen
- ✓ Battery level monitoring by remote control unit
- ✓ Program memory for 3 positions
- ✓ Collision protection feature



T-Base

- ◆ T-Base enables table optimal approach for the surgical team and equipment
- ◆ ABS Material with break and corrosion resistance



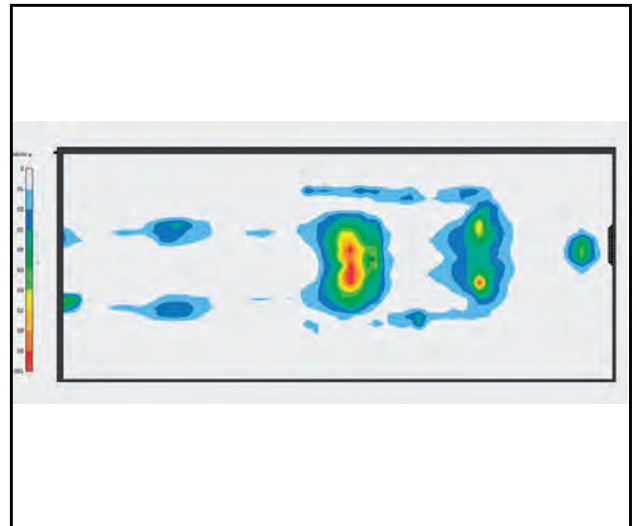
Control Feature

- ◆ Hand control or Manual Brake System
- ◆ Full function hand control for 7 different movements



Easy Approach for C-Arm

- ◆ Complete access to all table areas and its X-ray permeable table top allow high image quality
- ◆ Suitable base structure for easy access and approach of the C-arm scopy and surgical microscopes



Optimum Mattress Performance

- ◆ INSPIRAL operating table mattresses are designed and manufactured according to the Pressure Mapping test results.



Left Lateral Tilt Position



Struma Surgery Position



Gynecologic and Urologic Surgery Position



Reflex Position



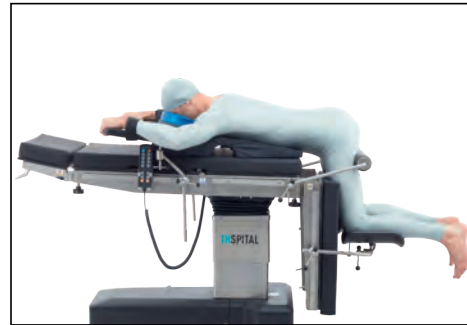
Flex Position



Chest (Breast) Surgery Position



Chest Surgery Position



Spinal, Proctologic Surgery Position



Meniscus Surgery Position



Ophthalmology Position



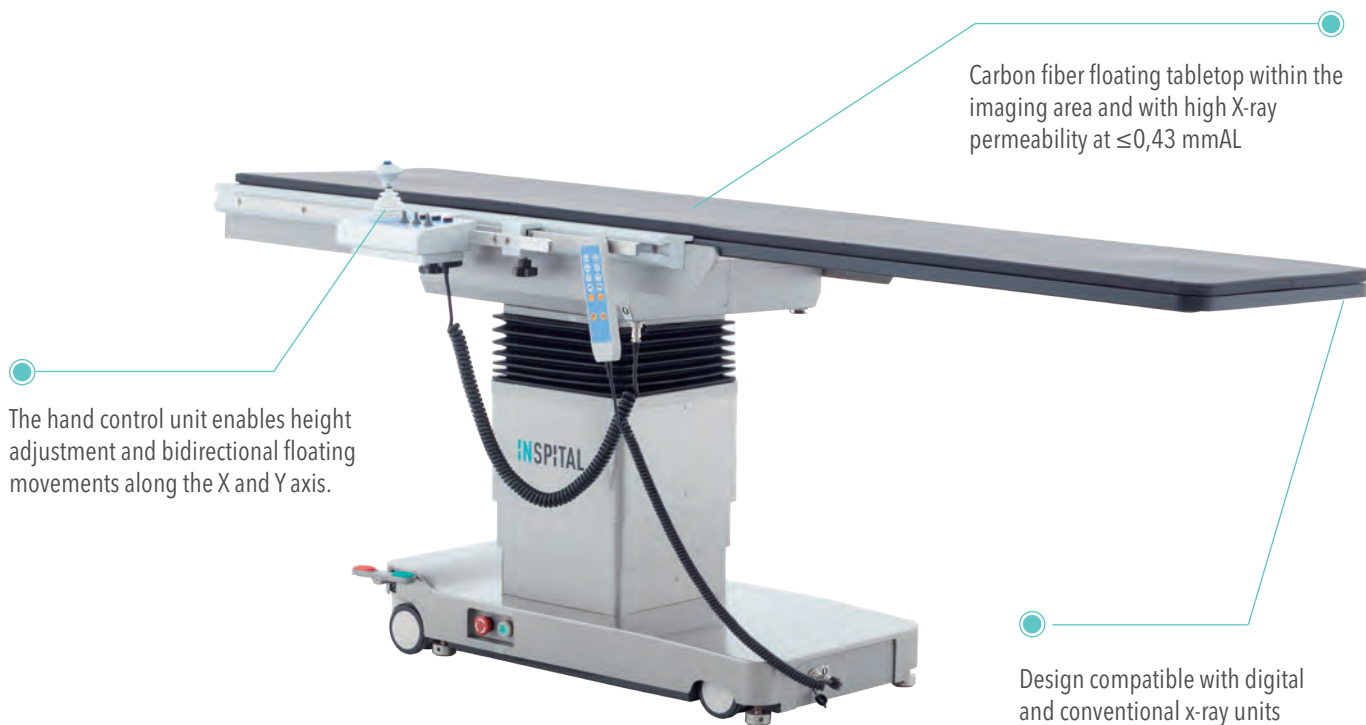
Arthroscopic Position



Orthopedic Fracture Surgery Position

C-ARM IMAGING TABLE / OT80.30

INSPIRAL OT80.30 imaging tables are designed to enable excellent X-ray accessibility with its carbon fiber top tray. It offers maximum imaging quality at low radiation and solutions for surgery and interventional radiology.



SPECIFICATIONS

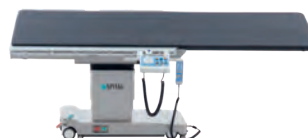
| | |
|------------------------|--------------------|
| • Table top: | : 2450*620 mm |
| • Length of imaging: | : 1860mm |
| • Longitudinal travel: | : 790 mm |
| • Lateral travel: | : 215 mm |
| • Vertical travel: | : 360mm (750-1140) |
| • Trendelenburg | : 18° |
| • Lateral tilt | : 15° |
| • Load capacity | : 200 kg |



Its 1100 mm carbon fiber tabletop enables various patient positions and low X-Ray absorption for clear imaging. This helps to extend the lifetime of the X-Ray machine Spheroid's tube.



The hand control unit enables height adjustment and bidirectional floating movements along the X and Y axis.





Orthopedic Traction Set

Orthopedic traction set is suitable for use with all INSPITAL operating tables in orthopedic surgeries.

- ◆ Made of 304 quality stainless steel
- ◆ Leg strainer function by mechanical lever
- ◆ Traction boots with up & down movement and rotation capability around its own axis

A.C:OT60.90



Neurosurgery Head Rest with Pin & Horseshoe Head Rest

A.C: OT60.80 SET

Neurosurgery head rest especially designed for use in neurosurgery operations.

- ◆ Extremely durable and rigid construction from aluminum alloy
- ◆ 3 pcs fixing system with pins and completely adjustable skull clamps
- ◆ Adjustment mechanism from 4 different points
- ◆ Easily mountable horse shoe head rest accessory



Cross Bar Adapter

A.C:OT60.82

- ◆ Can be used with skull fixing pins or horseshoe head rest accessories



Orthopedic Traction Set Carbon Fiber

Orthopedic traction set is suitable for use with all INSPITAL operating tables in orthopedic surgeries.

- ◆ Made of 304 quality stainless steel, Carbon Fiber
- ◆ Leg strainer function by mechanical lever
- ◆ Traction boots with up & down movement and rotation capability around its own axis

A.C:OT60.95



Carbon Fiber Traction Set Trolley

- ◆ Made of 304 quality stainless steel, Carbon Fiber
- ◆ Designed for carbon fiber traction kit
- ◆ 4 pcs castors 2 of them with brake
- ◆ Traction set easy to use, convenient for transport, storage

A.C:OT60.96





Arthroscopy Shoulder Support

Designed for use in arthroscopy operations and suitable for use with all operating tables

- ◆ 7 stage back rest adjustment
- ◆ Head fixing section with up & down movement
- ◆ Special design offering easy reach to shoulder area
- ◆ Body fixing strap

A.C:OT60.90



Radiolucent Spine Frame

- ◆ Completely remanufactured to like new standards.
- ◆ Radiolucent
- ◆ 60 degree radiolucency
- ◆ Lordosis control for improved surgical access
- ◆ Easy to use crank system
- ◆ Convenient transport and storage of frame

A.C:OT60.35



Leg Positioning Boot

An accessory designed for use in branches that require leg positioning

- ◆ Positioning system with one hand control and self-brakes
- ◆ Special booths for foot comfort

A.C:OT60.77



Leg Positioning Boot Trolley

- ◆ A great way to store and protect your investment, this strong and lightweight cart holds and transports your stirrups or legholders
- ◆ Compact and state-of-the-art, the cart will hold any stirrup from any manufacturer
- ◆ The sturdy molded two caster

A.C:OT60.78





IV Stand, 2 hooks

A.C.: OT60.05

- ◆ Including fixing clamp
- ◆ 2 hooks
- ◆ Adjustable height
- ◆ Made of stainless steel



IV Stand, 4 hooks

A.C.: OT60.06

- ◆ Including fixing clamp
- ◆ 4 hooks
- ◆ Adjustable height
- ◆ Made of stainless steel



Anaesthesia Screen, Adjustable

A.C.: OT60.04

- ◆ Including fixing clamp
- ◆ Extendible to both sides
- ◆ Adjustable height
- ◆ Made of stainless steel



Anaesthesia Screen, Fixed Size

A.C.: OT60.03

- ◆ Including fixing clamp
- ◆ Fixed width: Ø12x820x640 mm
- ◆ Made of stainless steel



Clamp, Rotatable & Adjustable A.C.:OT60.17

- ◆ For rod type accessories
- ◆ 360° rotatable
- ◆ Single lever for total lock
- ◆ Suitable for 25x10 mm rails
- ◆ Made of stainless steel



Clamp, Rotatable A.C.:OT60.18

- ◆ For rod type accessories
- ◆ 360° rotatable
- ◆ Double locking lever
- ◆ Suitable for 25x10 mm rails
- ◆ Made of stainless steel



Clamp, Easy Fix A.C.: OT60.15

- ◆ Easy to fix type. No need to slide from one side of the rail
- ◆ Suitable for 25x10 mm rails
- ◆ Made of aluminium



Clamp A.C.: OT60.16

- ◆ For round rod type accessories
- ◆ Suitable for 25x10 mm rails
- ◆ Made of stainless steel



Geopel Leg Rest

A.C.: OT60.08

- ◆ Pair
- ◆ Including fixing clamps
- ◆ Rotatable and tiltable
- ◆ Adjustable height
- ◆ Made of stainless steel



Leg rest according to Goepel

A.C.: OT60.98

- ◆ For positioning patient in lithotomy position
- ◆ Upholstery: PUR, electrically conductive
- ◆ Made of stainless steel



Knee Arthroscopy Support

A.C.: OT60.36

- ◆ Including fixing clamp
- ◆ Adjustable height
- ◆ Made of stainless steel



Arm rest with one-hand control

A.C.: OT60.85

- ◆ Including fixing clamp
- ◆ Adjustable height
- ◆ Made of stainless steel
- ◆ Rotatable by 360°, swivelling and tiltable by one-hand



Arm Support, Single

A.C.:OT60.01

- ◆ Including fixing clamp and strap
- ◆ Rotatable and tiltable armboard
- ◆ Adjustable height
- ◆ Made of stainless steel

Strap:

A.C.:OT60.02

- ◆ Adjustable length, easy to fix

Arm Adaptor

A.C.:OT60.34

- ◆ Arm extension apparatus



Arm rest

A.C.:OT60.89

- ◆ Rotatable and tiltable by means of ball joint
- ◆ Adjustable in height and horizontally slidable
- ◆ Including fixing clamps
- ◆ Made of stainless steel



Lower Armboard

A.C.: OT60.87

- ◆ For use in lateral, beach chair, and neuro park bench positions
- ◆ Ball joint adjustability
- ◆ Adjustable height
- ◆ Wide range of motion
- ◆ Including fixing clamp



Leg Strap

A.C.: OT60.23

- ◆ Pair
- ◆ Adjustable



Body Fixing Strap

A.C.: OT60.07

- ◆ Total length: 2300 mm
- ◆ Large cushion for body
- ◆ Easily adjustable length



Body and leg strap

A.C.: OT60.97

- ◆ Including fixing clamps
- ◆ Steplessly adjustable
- ◆ Made of stainless steel



Sliding Handles

A.C.: OT60.25

- ◆ Designed for easy movement of the table
- ◆ Pair
- ◆ Including fixing clamps
- ◆ Made of stainless steel



Leg Holder With Loops

A.C.: OT60.74

- ◆ With washable heel loops.



Irrigation Bowl, Rectangle Form A.C.: OT60.11

- ◆ Including fixing clamp
- ◆ 2 joints rotatable arms
- ◆ Adjustable height
- ◆ Sizes: 325x265x95 mm
- ◆ Made of stainless steel



Irrigation Bowl With Drainage, Rectangle Form
A.C.: OT60.12

- ◆ Including fixing clamp
- ◆ Including drainage tube
- ◆ 2 joints rotatable arms
- ◆ Adjustable height
- ◆ Sizes: 325x265x95 mm
- ◆ Made of stainless steel



Waste Bin A.C.: OT60.14

- ◆ 20 L capacity
- ◆ Compatible with irrigation bowls with drainage
- ◆ Tube hole on the cover
- ◆ 5 castors and rubber bumper
- ◆ Including carriage handle and cover
- ◆ Made of stainless steel



Irrigation Bowl With Drainage, Round Form

A.C.: OT60.13

- ◆ Including fixing clamp
- ◆ Including drainage tube
- ◆ 2 joints rotatable arms
- ◆ Adjustable height
- ◆ Ø260x80 mm
- ◆ Made of stainless steel



Shoulder Support

A.C.: OT60.09

- ◆ Pair
- ◆ Including fixing clamps
- ◆ Extendible
- ◆ Adjustable height
- ◆ Made of stainless steel



Lateral Support

A.C.: OT60.10

- ◆ Pair
- ◆ Including fixing clamps
- ◆ Extendible
- ◆ Rotatable and tiltable
- ◆ Adjustable height
- ◆ Made of stainless steel



Proctology Set

A.C.: OT60.20

- ◆ Set of rectoscopy roll and knee supports
- ◆ Including fixing clamps
- ◆ Rotatable and tiltable knee support
- ◆ Height and angle adjustable rectoscopy roll
- ◆ Made of stainless steel



Opthalmologic Head & Wrist Support A.C.: OT60.21

- ◆ Rotatable and tiltable head support and wrist support
- ◆ Height and angle adjustable
- ◆ Made of stainless steel



Weinberger Hand Traction Set A.C.: OT60.22

- ◆ For the secure fixation of hand and upper arm
- ◆ Height and distance adjustable hand cuff
- ◆ Height adjustable arm extension roll
- ◆ Including fixing clamps
- ◆ Made of stainless steel



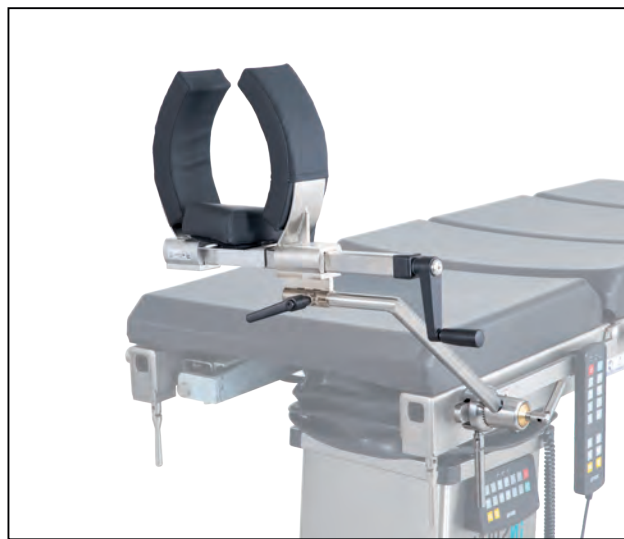
Knee Arthroscopy Support A.C.: OT60.72

- ◆ Including fixing clamp
- ◆ Adjustable height
- ◆ Made of stainless steel



Meniscus Positioning Roll A.C.: OT60.24

- ◆ Including fixing clamp
- ◆ Adjustable height
- ◆ Made of stainless steel



Arthroscopic leg holder system A.C.: OT60.86

- ◆ Incl. upholstery, clamp and fixture strap
- ◆ Width of leg holder adjustable in three steps
- ◆ Made of stainless steel



Foot Support Plate

A.C.: OT60.19

- ◆ Pair
- ◆ Including fixing clamps
- ◆ Made of stainless steel



Carbonfiber Extension Board

A.C.: OT60.73

- ◆ Fixing from the leg section
- ◆ Carbonfiber material



Transfer Leg Rest

A.C.: OT70.00

- ◆ For short-time positioning of legs
- ◆ Docking and undocking at pelvis section
- ◆ Made of stainless steel and artificial leather coated foam



Mayo Table

A.C.: OT60.84

- ◆ Height adjustable, rotatable, tiltable
- ◆ Including fixing clamp
- ◆ Made of stainless steel



X-Ray Cassette Support A.C.: OT60.30

- ◆ Used to fix and support X-Ray cassettes
- ◆ Including fixing clamp
- ◆ Made of stainless steel



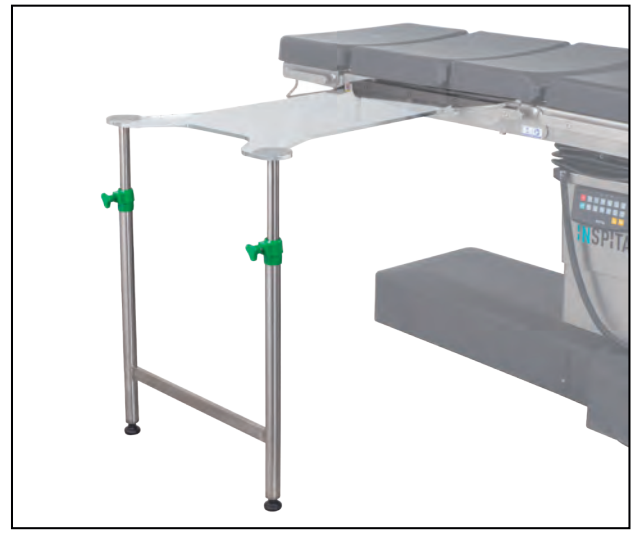
X-Ray Cassette Tray A.C.: OT60.31

- ◆ Used to carry and position the X-Ray cassettes
- ◆ Including fixing clamp
- ◆ Made of stainless steel



Arm Surgery Extension A.C.: OT60.26

- ◆ Including fixing clamps
- ◆ Height adjustable
- ◆ 2 support leg with brake castors
- ◆ Made of stainless steel



Arm Surgery Extension A.C.: OT60.26

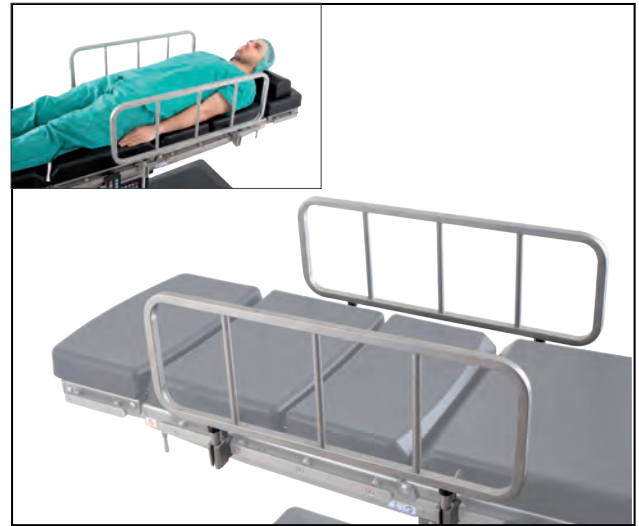
- ◆ Including fixing clamps
- ◆ Height adjustable
- ◆ 2 support leg with brake castors
- ◆ Made of stainless steel



Arm Protector

A.C.: OT60.75

- ◆ Polycarbonate material plate, easy to install, used for placement/protection of patient's arm, which is protected safely and in an anatomically correct way



Railing Lateral Edge For The Table Top A.C.: OT60.38

- ◆ Made of stainless steel, can be tilted.
- ◆ Complete with fast locking clamp.



Flexible anaesthesia screen

A.C.:OT60.83

- ◆ Extendible to both sides
- ◆ Including fixing clamp
- ◆ Made of stainless steel



Spinal Cord Positioning Device A.C.: OT60.37

- ◆ Special device for spinal cord surgery, totally radiolucent, with arch shape
- ◆ Complete with ergonomic cushions and edges for iliac crests; rotating, swivelling, and height adjustable knee supports.



Extension segments

A.C.:OT60.88

- ◆ Segments for extension of operating table's lying surface
- ◆ Integrated side rails
- ◆ Also available with viscoelastic foam upholstery



Patient Heating System

A.C.: OT60.71

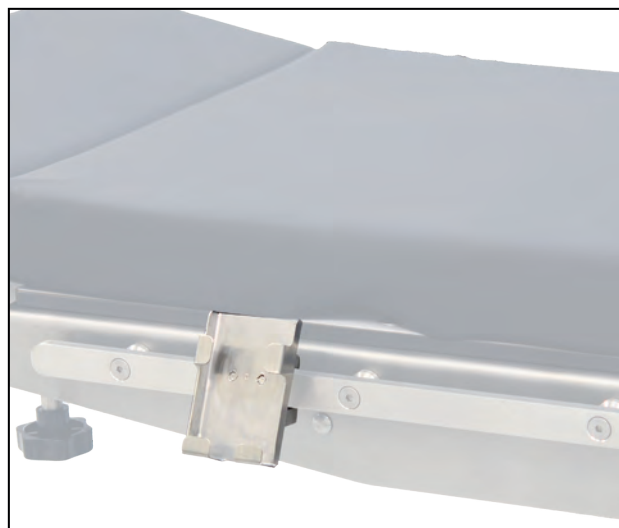
- ◆ Displays adjustable and measured temperature simultaneously
- ◆ Advanced alarm and security system
- ◆ Provides safe use with key lock
- ◆ Temperature sensitivity 0.1°
- ◆ Polyurethane fabric and carbonfiber heating layer



Head rest small

A.C.:OT60.99

- ◆ Easy adjustment by means of gas spring
- ◆ Docking and undocking at back rest



Support for Hand Control Unit

A.C.: OT60.29

- ◆ Easy to fix to accessory rail
- ◆ Made of stainless steel



Hand Control Unit

A.C.: OT60.27

- ◆ Full function hand control unit



Foot Switch

A.C.: OT70.01

- ◆ Additional control unit to adjust the main functions like height, tilt and Trendelenburg movement
- ◆ Cable connected



Thyroid Position

A.C.:OT60.66

- ◆ Provides hyperextension, prevents postoperative discomfort.
- ◆ Dimensions (LxW) 72x88 cm



Various Full Body Position

A.C.:OT60.67

- ◆ Dimensions (LxW) 165x72 cm



Kidney Position-Lateral Position A.C.:OT60.64

- ◆ Easily up in nephrectomy and also for handicapped person with cerebral palsy.
- ◆ Dimensions (LxW) 73x100 cm



Kidney Position-Lateral Position A.C.: OT60.65

- ◆ Easily up in nephrectomy and also for handicapped person with cerebral palsy.
- ◆ Dimensions (LxW) 118x88 cm



Kidney Position-Lateral Position A.C.:OT60.68

- ◆ Easily up in nephrectomy and also for handicapped person with cerebral palsy.
- ◆ Dimensions (LxW) 73x100 cm



Head Stabilization Position A.C.:OT60.69

- ◆ Stabilizes head in eye, facial or dental surgery.
- ◆ Dimensions (LxW) 30x40 cm

Supine Position A.C.:OT60.70

- ◆ Supports and eliminates back pains during long procedures.
- ◆ Prevents foot drop splint inEmergency.
- ◆ Dimensions (LxW) 30x55 cm



Orthopedic Traction Set Trolley A.C.: OT60.33

- ◆ For the storage and easy installation of orthopedic traction set
- ◆ Large basket for smaller accessories
- ◆ Four castors, two with brake
- ◆ Made of stainless steel
- ◆ Without accessories



Accessory Trolley A.C.: OT60.32

- ◆ For the storage of table accessories
- ◆ Four rails to hang all accessories
- ◆ Four castors, two with brake
- ◆ Made of stainless steel
- ◆ Without accessories



Step, Double

A.C.: BS10.20

- ◆ Sizes: 640x600x400 mm
- ◆ Made of stainless steel



Step, Single

A.C.: BS10.10

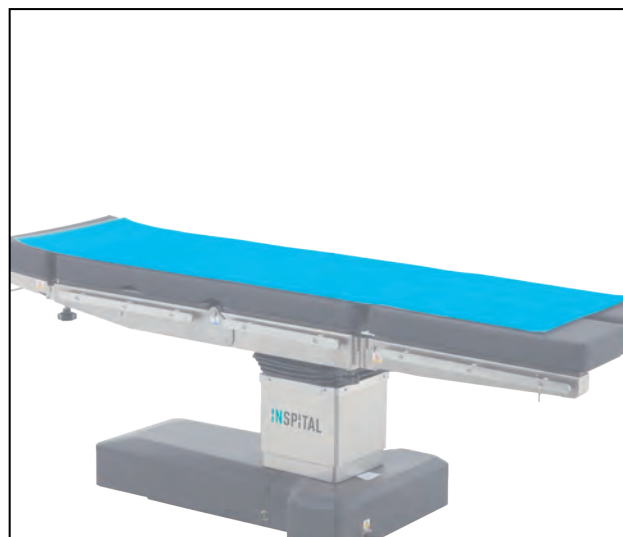
- ◆ Sizes: 600x350x180 mm
- ◆ Made of stainless steel



Wilson Frame Set

A.C.: OT60.61

- ◆ Consist of 1 piece of large cushion and 4 pieces of gel pads



Gel Mattress, Adult

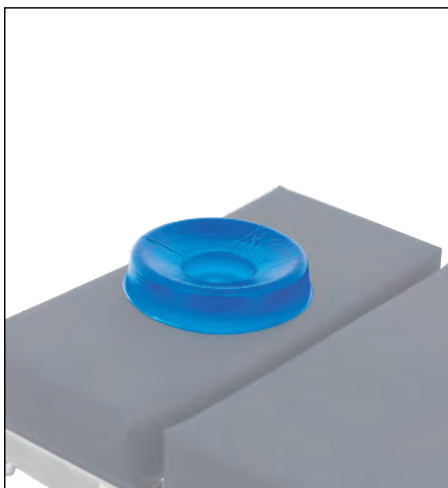
A.C.: OT60.62

- ◆ Sizes: 1830x500x100 mm
- ◆ Made of gel

Gel Mattress, Pediatric

A.C.: OT60.63

- ◆ Sizes: 660x310x130 mm
- ◆ Made of gel

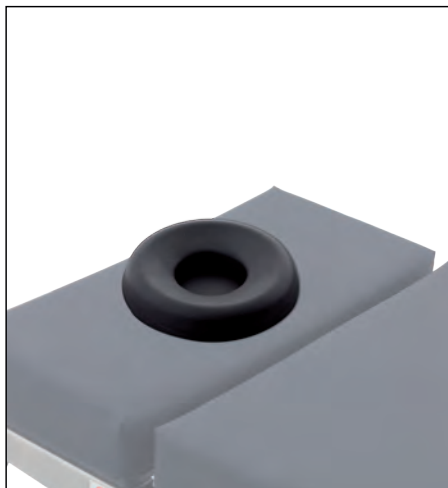


Head Rest, Gel, Adult A.C.: OT60.50

- ◆ Sizes: 200x75x45 mm
- ◆ Made of gel

Head Rest, Gel, Pediatric A.C.: OT60.51

- ◆ Sizes: 140x60x35 mm
- ◆ Made of gel



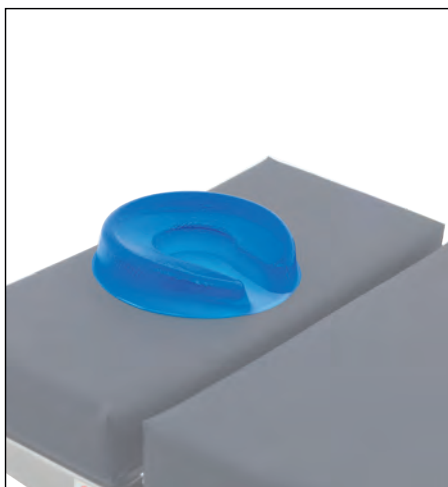
Head Rest, PU, Adult A.C.: OT60.40

- ◆ Sizes: 195x85x40 mm
- ◆ Made of PU



Arm Rest, Gel A.C.: OT60.54

- ◆ Sizes: 400x130x20 mm
- ◆ Made of gel

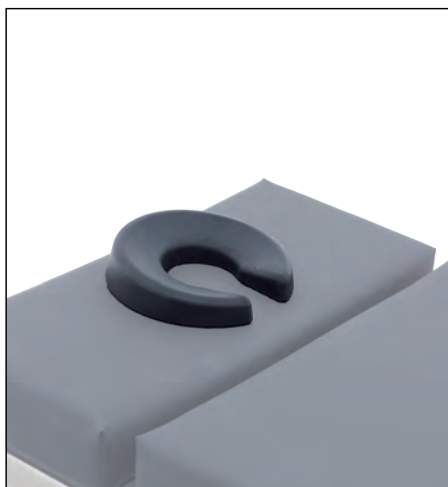


Horseshoe Head Rest, Gel, Adult A.C.: OT60.52

- ◆ Sizes: 200x75x45 mm
- ◆ Made of gel

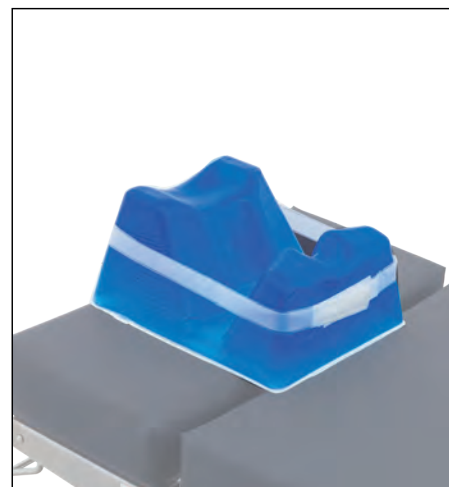
Horseshoe Head Rest, Gel, Pedi. A.C.: OT60.53

- ◆ Sizes: 140x60x35 mm
- ◆ Made of gel



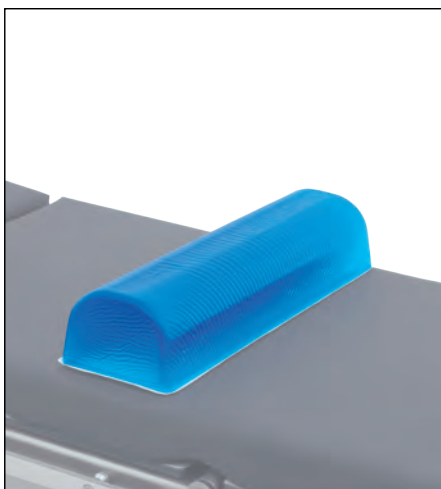
Horseshoe Head Rest, PU, Adult A.C.: OT60.41

- ◆ Sizes: 195x80x45 mm
- ◆ Made of PU



Prone Head Support, Gel A.C.: OT60.57

- ◆ Sizes: 280x230x145 mm
- ◆ Made of gel

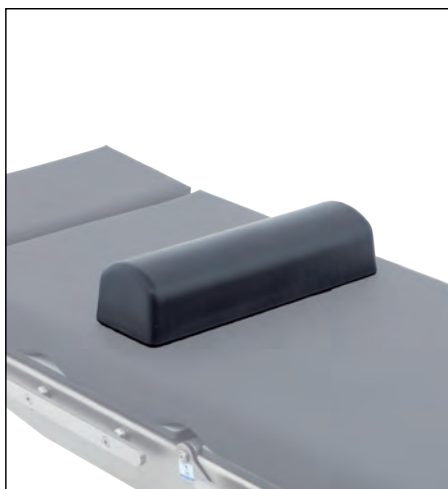


Chest Roll, Gel, Adult A.C.: OT60.55

- ◆ Sizes: 515 x170x100mm
- ◆ Made of gel

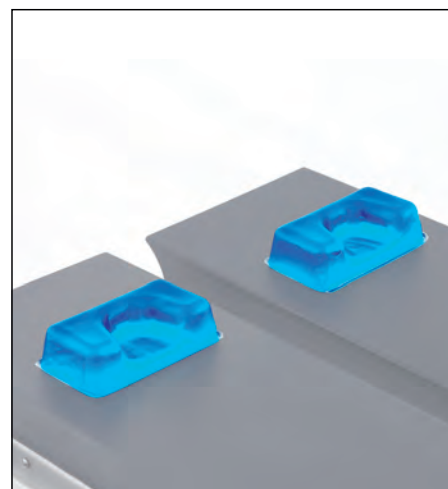
Chest Roll, Gel, Pediatric A.C.: OT60.56

- ◆ Sizes: 420x170x100mm
- ◆ Made of gel



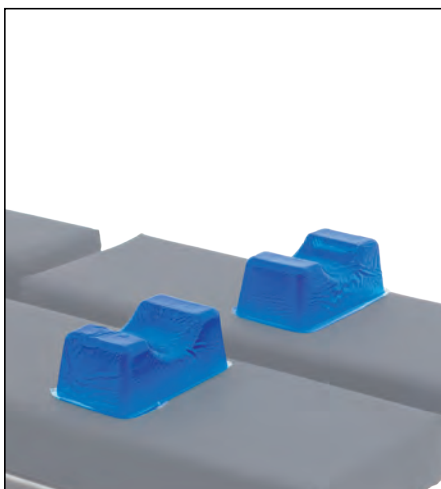
Chest Roll, PU A.C.: OT60.42

- ◆ Sizes: 440x135x100 mm
- ◆ Made of PU



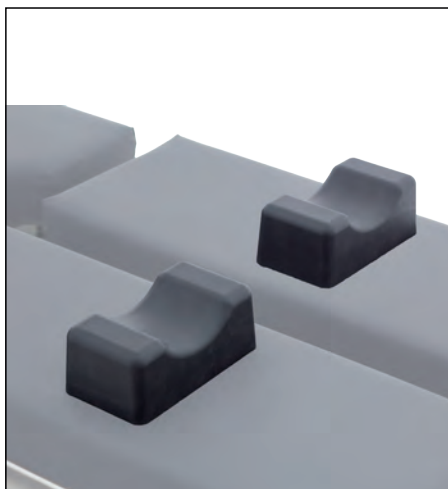
Heel Support, Gel A.C.: OT60.59

- ◆ Sizes: 170x110x50 mm
- ◆ Pair
- ◆ Made of gel



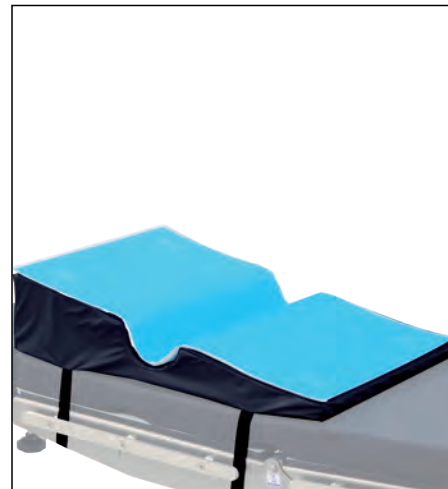
Foot Wrist Support, Gel A.C.: OT60.58

- ◆ Sizes: 100x110x70 mm
- ◆ Pair
- ◆ Made of gel



Foot Wrist Support, PU A.C.: OT60.43

- ◆ Sizes: 175x95x70 mm
- ◆ Pair
- ◆ Made of PU



Lateral Positioner, Gel A.C.: OT60.60

- ◆ Consist of 1 piece of large cushion and 1 piece of gel pad
- ◆ Sizes: 720x500x100 mm

Laparoscopic Surgery

- Anesthesia Screen, Fixed Size OT60.03
- Arm Support OT60.01
- Leg Positioning Boot OT60.77
- Head Rest, Gel, Adult OT60.50
- Gel Mattres, Adult OT60.62
- Shoulder Support OT60.09

Robotic Surgery

- Anesthesia Screen, Fixed Size OT60.03
- Arm Support OT60.01
- Leg Positioning Boot OT60.77
- Shoulder Support OT60.09
- Body Fixing Strap OT60.07

Urology

- Anesthesia Screen, Fixed Size OT60.03
- Arm Support OT60.01
- Irrigation Bowl with Drainage Rectangle F. OT60.12
- Leg Positioning Boot OT60.77
- Leg Holder With Loops OT60.74
- Spinal Cord Positioning Device OT60.37

OB-GYN

- Anesthesia Screen, Fixed Size OT60.03
- Arm Support OT60.01
- Leg Positioning Boot OT60.77
- Leg Holder With Loops OT60.74

Bariatric Surgery/Gastric Position

- Anesthesia Screen, Fixed Size OT60.03
- Arm Support OT60.01
- Foot Wrist Support Gel OT60.58
- Arm Surgery Extension OT60.26
- Arm Rest, Gel OT60.54
- Body Fixing Strap OT60.07
- Extension segments OT60.88

Traumatology/Shoulder Surgery

- Arm Support OT60.01
- Arm Surgery Extension OT60.26
- Arthroscopy Shoulder Support OT60.76
- Lateral Support OT60.10

Traumatology/Hand Surgery

- Anesthesia Screen, Fixed Size OT60.03
- Arm Support OT60.01
- Arm Rest, Gel OT60.54

Orthopedic Surgery/Femur Fracture/Spine

- Anesthesia Screen, Fixed Size OT60.03
- Arm Support OT60.01
- Orthopedic Traction Set OT60.90
- Arm Surgery Extension OT60.26
- Gel Mattres, Pediatric OT60.36
- Orthopedic Traction Set Carbon Fiber OT60.95

Spine /Kidney Bridge

- Anesthesia Screen, Fixed Size OT60.03
- Arm Support OT60.01
- Body Fixing Strap OT60.07

Orthopedic Surgery/Femur Fracture/Lateral

- Anesthesia Screen, Fixed Size OT60.03
- Arm Support OT60.01
- Orthopedic Traction Set OT60.90
- Arm Surgery Extension OT60.26
- Radiolucent Acrylic Armboard OT60.39

Orthopedic Surgery/Tibia Fracture

- Anesthesia Screen, Fixed Size OT60.03
- Arm Support OT60.01
- Orthopedic Traction Set OT60.90
- Arm Surgery Extension OT60.26

Spine Surgery in Prone Position

- Anesthesia Screen, Fixed Size OT60.03
- Arm Adaptor OT60.34
- Prone Head Support, Gel OT60.57
- Arm Support OT60.01

Pediatric Set Ups

- Anesthesia Screen, Fixed Size OT60.03
- Gel Matress, Pediatric

Cardiovascular Surgery

- Anesthesia Screen, Fixed Size OT60.03
- Arm Support OT60.01
- Arm Rest Gel OT60.54
- Clamp OT60.16

Eye Surgery

- Head rest small OT60.99

Lateral/Kidney Surgery

- Anesthesia Screen, Fixed Size OT60.03
- Arm Support OT60.01
- Lateral Support OT60.10

Neurosurgery/Half Sitting Position

- Anesthesia Screen, Fixed Size OT60.03
- Arm Support OT60.01
- Lateral Support OT60.10
- Neurosurgery Head Rest with Pin& Hor. OT60.80
- Head Rest
- Body Fixing Strap OT60.07

Neurosurgery/Parkbench Position

- Anesthesia Screen, Fixed Size OT60.03
- Arm Support OT60.01
- Lateral Support OT60.10
- Neurosurgery Head Rest with Pin& Hor. OT60.80
- Head Rest

Neurosurgery/Prone

- Anesthesia Screen, Fixed Size OT60.03
- Arm Support OT60.01
- Lateral Support OT60.10
- Neurosurgery Head Rest with Pin& Hor. OT60.80
- Head Rest
- Radiolucent Spine Frame OT60.35
- Body Fixing Strap OT60.07
- Lower Armboard OT60.87

INSPI TAL

Made in Germany

**INSPI TAL MEDICAL
TECHNOLOGY GmbH**

Kaiserswerther Str. 83B,
40878 Ratingen / Germany
+49 (2102) 939 46 94
info@inspital.com
www.inspital.com

KT-01-IN-OP / 01.22/02

All information in this document is subject change without prior notice. No parts of this document may be reproduced or transmitted in any form by any means without the express written permission of the manufacturer. All brand name and product names in this document are trademarks or registered trademarks of INSPI TAL.



Digital Catalog